



94

# Alba

design by Forme

For Alba the front inclination creates two separate reflections of light that give the design a defined and elegant style. Like the beginning of a new day, or the dawn of a new era.

*In Alba l'inclinazione frontale crea due diversi rimbalzi di luce che donano al design uno stile definito ed elegante. Come l'inizio di un nuovo giorno, l'alba di una nuova era.*

“A striking contrast in a simple and rigorous design.”



95

# Finishes

# Finiture



**B03**  
Scratched Bronze  
*Bronzo Graffiato Opaco*



**B11**  
Pearl Bronze  
*Bronzo Perla*



**N16**  
Pearl Nickel  
*Nichel Perla*

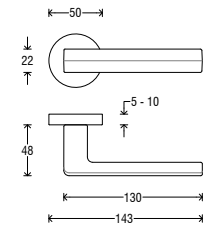


**N52**  
Matt Black  
*Nero Opaco*

## Handle on round rosette *Maniglia su rosetta tonda*



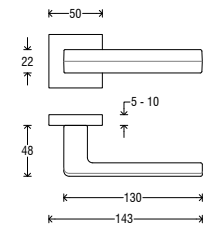
Handle <i>Impugnatura</i>	Rosette <i>Rosetta</i>	Finish <i>Finitura</i>
A339	RFXTO (Fixa) RSXTO (Slim)	B03 B11 N16 N52



## Handle on square rosette *Maniglia su rosetta quadra*



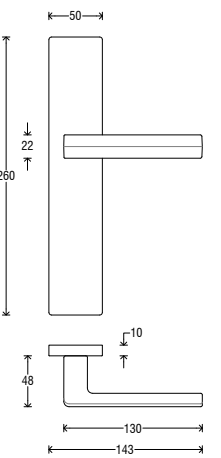
Handle <i>Impugnatura</i>	Rosette <i>Rosetta</i>	Finish <i>Finitura</i>
A339	RFXQ0 (Fixa) RSXQ0 (Slim)	B03 B11 N16 N52



## Handle on Asti plate *Maniglia su placca Asti*



Handle <i>Impugnatura</i>	Plate <i>Placca</i>	Finish <i>Finitura</i>
A339	P06 C P06 O P06 Y P06 W	B03 B11 N16 N52



## DK (Dry Keep) on rectangular rosette *DK su rosetta rettangolare*



Handle <i>Impugnatura</i>	Rosette <i>Rosetta</i>	Finish <i>Finitura</i>
D339	RRD	B03 B11 N16 N52

